

# CRY SOUND

## CRY605 Artificial Mouth

### Summary

CRY605 Artificial Mouth is a sound source which simulates the sound field around the human mouth at close quarters. It can be used to testing the acoustic parameters of transmitters and microphones.

CRY605 Artificial Mouth has an in-built 20dB power amplifier and can be connected to soundcards and signal generators directly with easy operation and high stability.



### Features

- ✓ Complies with standards: IEEE 269,661
- ✓ An in-built 20dB power amplifier
- ✓ Sound source for acoustic measurement
- ✓ High stability

### Specification

CRY605 Artificial Mouth	
Max continuous output SPL	200Hz – 10kHz: 110dB (25mmMRP) 100Hz – 10kHz: 100dB (25mmMRP)
Distortion (THD)	200Hz – 10kHz: Typically <1%, max 1.5% (94dB SPL, 25mmMRP)
Frequency Response	94dB ±1dB (100Hz - 10kHz) after compensation
Maximum Input Signal	1Vrms
Power Amplifier Power Supply	19VDC
Power Amplifier Gain	20dB
Power Amplifier Power	20W
Instantaneous Max Power	100W (1s)
Mouth Opening Diameter	Ø20mm
Lip Ring	Diameter: Ø51mm Height: 25mm
Diameter	Ø100mm
Height	90mm
Weight	1.0kg
Connector	BNC

## Typical Curve

Fig1 driving voltage is 0.1V (After amplifying, it is 1V), the frequency response curve at 25mm (MRP)

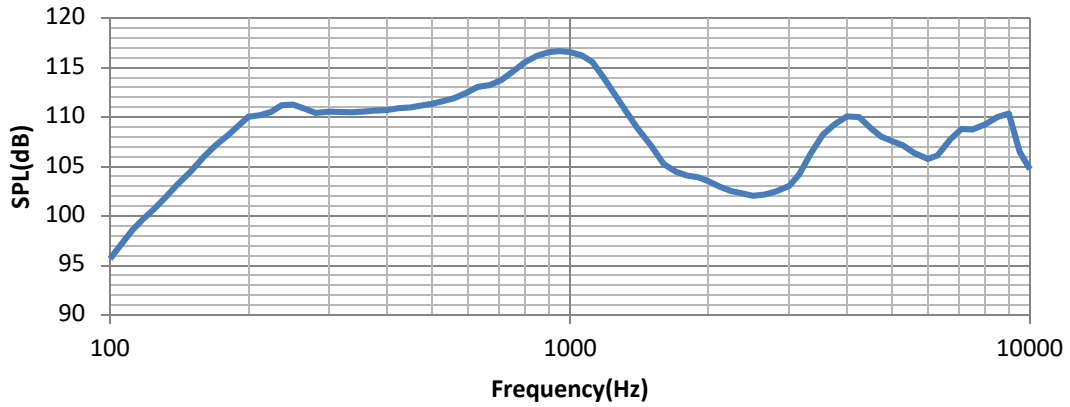


Fig2 the frequency response curve for 94dB after compensation

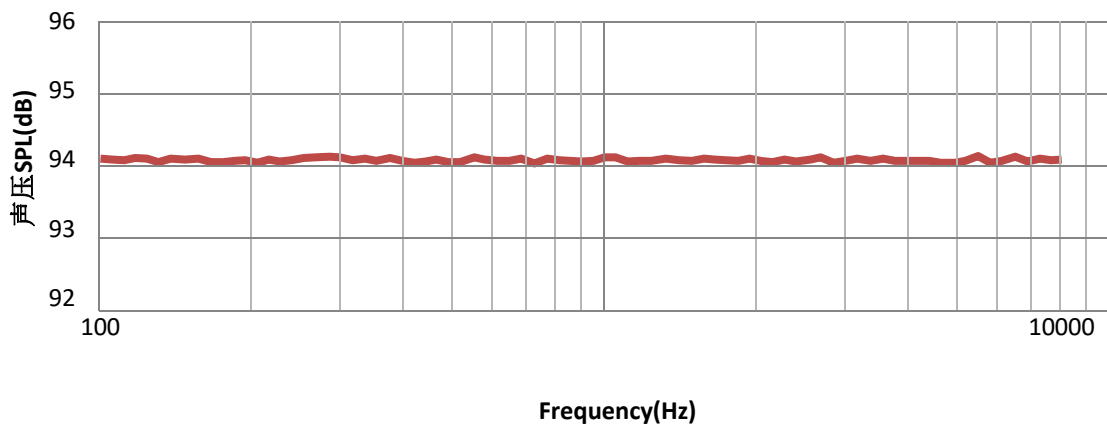


Fig3 the distortion (THD) curve after compensating to SPL 94dB

