



CRY609 Artificial Mouth

CRY609 Artificial Mouth is a sound source which simulates the sound field around the human mouth at close quarters. It can be used to testing the acoustic parameters of transmitters and microphones.

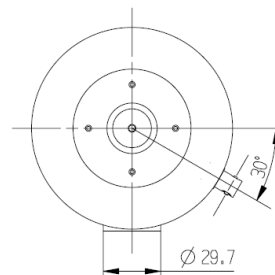
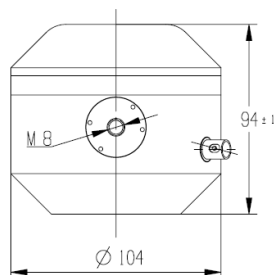


Features

- ✓ Complies with standards: IEEE 269,661
- ✓ Conforms to Standards: ITU-T Rec. P.51
- ✓ Sound source for acoustic measurement
- ✓ Low distortion, reached the international advanced level
- ✓ High stability

Technique Specification

CRY602 Artificial Mouth	
Min continuous output SPL	200Hz – 10kHz: 110dB (25mmMRP)
	100Hz – 10kHz: 100dB (25mmMRP)
Distortion (THD)	200Hz – 10kHz:Typically <0.5%, max 0.8% (94dBSPL, 25mmMRP)
Frequency Response	94dB ±1 dB (50Hz - 20kHz) after compensation
Impedance	4 Ohm
Continuous Max Power	20W
Instantaneous Max Power	100W (1s)
Mouth Opening Diameter	Ø20mm
Lip Ring	Diameter: Ø45mm
	Height: 25mm
Diameter	Ø104mm
Height	94mm
Weight	1.32kg
Connector	BNC





Typical Curve

Fig1 driving voltage is 1V (0.25W), the frequency response curve at 25mm (MRP)

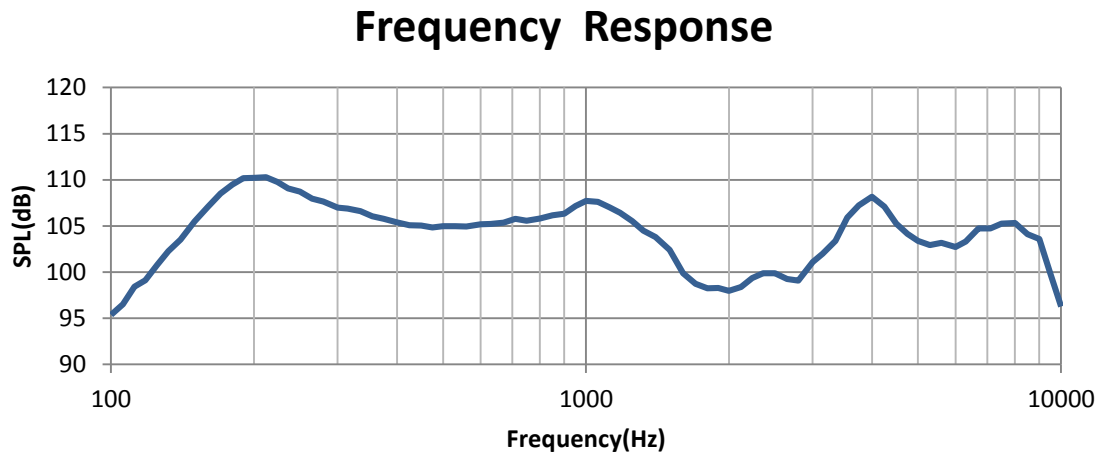


Fig2 the frequency response curve for 94dB after compensation

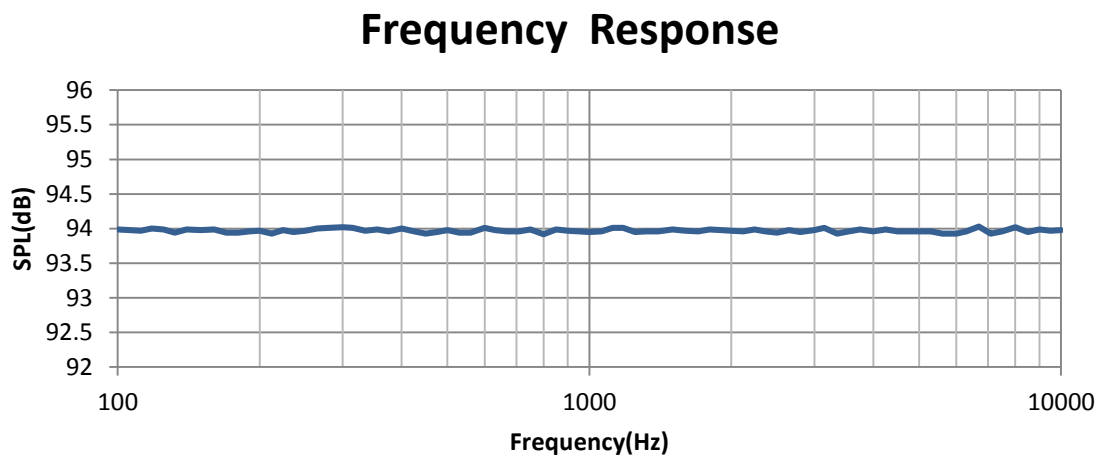


Fig3 the distortion (THD) curve after compensating to SPL 94dB

